

APROP



ALLOTJAMENTS DE PROXIMITAT PROVISIONALS

Temporary Local Social Housing

barcelona.cat/allotjamentsaprop

Ajuntament de
Barcelona



DECENT ACCOMMODATION TO TACKLE THE HOUSING EMERGENCY

Having a decent home is a key aspect of quality of life that makes it easier to put down roots in a neighbourhood and enables local residential and association networks to be established.

The numerous initiatives provided for under the Right to Housing Plan for 2016-2025 also include the need to come up with solutions to enable action to be taken as fast as possible to tackle the housing emergency.

Temporary Local Social Housing (APROPs), made from recycled shipping containers using industrialised methods, are part of the municipal pledge to innovate in order to urgently combat this situation. Following the successful examples of similar projects in cities such as London, Copenhagen and Vancouver, this is a rapid construction method for producing sustainable, quality accommodation aimed at preventing local residents from being forced out of their neighbourhoods.

TOWARDS A STABLE INDEPENDENCE

APROPs provide temporary accommodation and socio-educational assistance to individuals and families at risk of social exclusion and who receive assistance from social services until they can find a stable housing solution.

With the aim of innovating and improving the assistance provided to the families attended to, preparing them for a path towards increasingly stable autonomy, the socio-educational support is adapted to each individual or family according to their needs. The aim is to consolidate the skills and abilities of the families so they can live independently and self-sufficiently, putting the emphasis on employment and training support and on saving money during their stay at the service, to ensure a solution with greater guarantees of independence and self-sufficiency.

By addressing the relational, educational, social and employment needs of the individuals and families, the support encourages a positive transformation and improvements within the family. Support is also offered to help bring about responsible autonomy dynamics in the community uses of collective spaces and to ensure a positive community relationship between the families housed and between these and the local neighbourhood network and social environment. Finally, support and accompaniment are given in the search for and transition towards a stable residential alternative.



APROP

The APROP programme was started in January 2020 with a pilot project in the Ciutat Vella district, 140 m from the Rambles. Launched by the Municipal Institute of Social Services, this first building, built within 16 weeks, consists of 12 units, distributed over 4 floors.

December 2022 sees the start of the APROP Glòries activity. After 26 weeks of work - well under the two years or more than conventional construction projects take - the property consists of 42 accommodation units, distributed over 7 floors and made up of a total of 77 prefabricated modules.



WHAT ARE THEY?

APROPs are facilities intended for temporary accommodation, made from groups of industrialised and easy-to-assemble modules on sites located in environments where the local residents experiencing residential exclusion carry out their everyday lives.

WHERE WILL THEY BE BUILT?

APROPs, being transportable buildings, are located on vacant plots of land awaiting occupation by dwellings or facilities. Temporary uses of these plots of land enable housing claimants to maintain their residence close to their spaces of origin.

HOW ARE THEY BUILT?

The industrialised construction system means that much of the work can be done in a workshop, such as the openings and reinforcements of the shipping containers, the positioning of partition walls and sanitary and utility-supply installations. The complete adaptation of the accommodation modules in workshops notably reduces construction times and the environmental impact of the construction work.

This modularity means that complete and customised series of pieces can be grouped, combined and put together, thereby adapting each project to its environment.

WHAT ARE THEY LIKE?

Shipping containers are adapted to form one- or two-bedroom units. Both are noted for having natural lighting and ventilation thanks to the fact that they have front and back façades separated by a depth of only 12 metres. The units have their own outdoor spaces and communal outdoor spaces (balconies and walkways), are equipped with functional and versatile furniture and ensure thermal, acoustic and light comfort.

WHO LIVES IN THEM?

APROPs are intended for individuals and families with children in their care, at risk of social exclusion and attended to by social services. They are families who either do not have a home or whose home is not fit for living in, who are experiencing socio-economic hardship and are in need of socio-educational support.

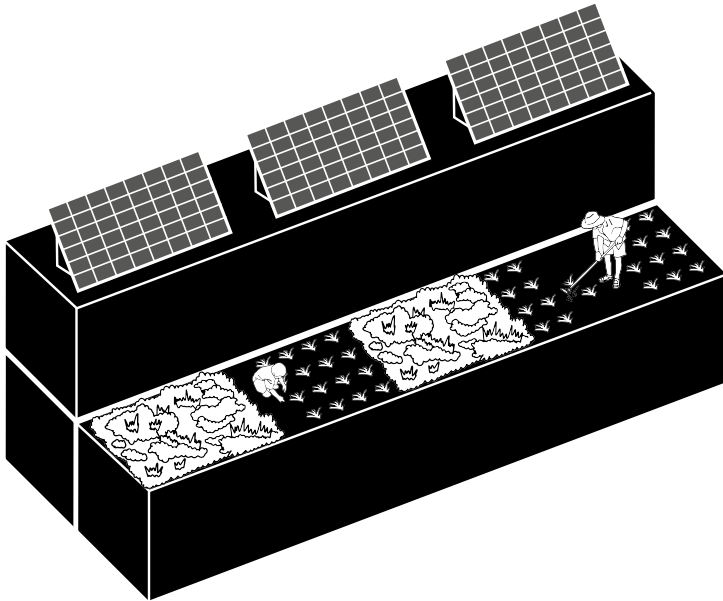
Access to the accommodation is always through social services and they are designed for stays of up to two years.

The financial contribution from the resident individual or family depends on their income (between 20% and 30%).

CIRCULAR ECONOMY

APROPs are aligned with current sustainability and circular economy standards. The building method reduces the impact of dust, mud and noise pollution as well as the impact on the environment by using recyclable elements and materials.

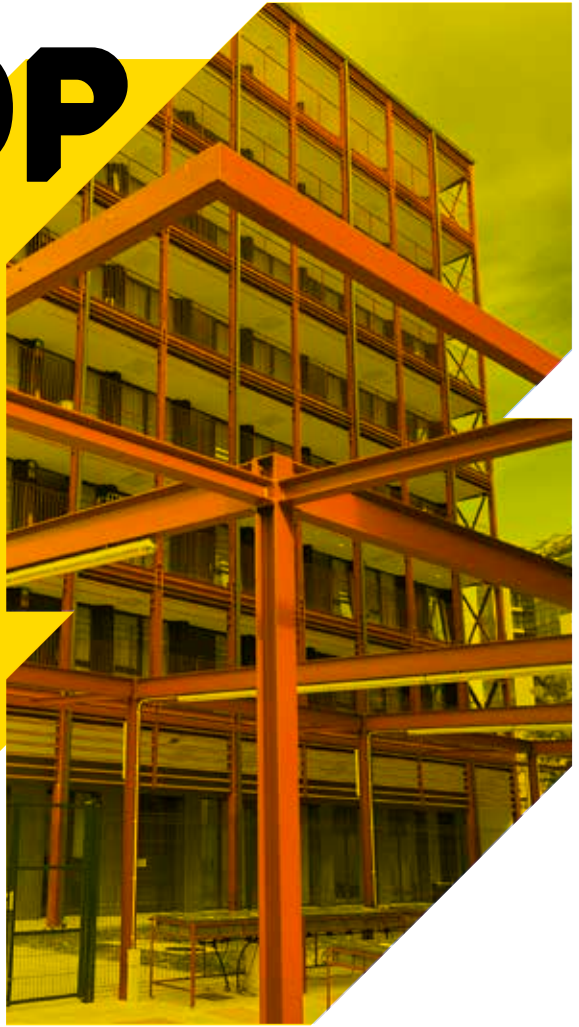
The building process for the first APROP, in the Gòtic neighbourhood, enabled a 33% reduction in the total use of non-renewable primary energy and CO2 emissions and a 48% reduction in the consumption of resources.



APROP GLÒRIES

C/ Irena Sendler, 22

- Gross floor area: 3.666 m²
- Accommodation: 42
(35 two-bedroom +
7 one-bedroom)
- Works: 26 weeks
- Financial investment:
5.77 million euros



URBAN ALLOTMENT MANAGED BY INDIVIDUALS WITH DISABILITIES

The 550 m² block interior has a next-generation hydroponic urban allotment, managed by associations for individuals with disabilities of various kinds and by the individuals residing in the facility. This allotment, which has joined the “Hort al terrat” [Roof terrace allotment] network programme promoted by the Municipal Institute for People with Disabilities (IMPD), will cultivate a variety of vegetables and native fruit trees.

It occupies roughly half the outside space of the block interior; the other half is intended as a social space where residents can meet and interact with each other.

The building's ground floor has assistance and communal-activity spaces, a communal laundry room and a large multi-purpose room.

APROP CIUTAT VELLA

C/ Nou de Sant
Francesc, 10

- Gross floor area: 816 m²
- Accommodation: 12
(8 one-bedroom +
4 two-bedroom)
- Works: 16 weeks
- Financial investment:
940,000 euros



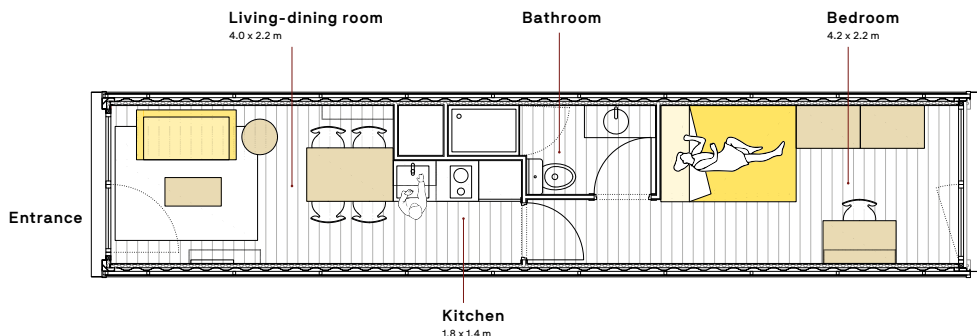
GROUND FLOOR OPEN TO THE NEIGHBOURHOOD

The APROP Ciutat Vella's ground floor houses spaces for extending the Gòtic Primary Healthcare Centre, near to the facility. The entire building stands out for its “double-skin” façade covering which enables urban alignments to be maintained on the one hand, and serves as a passive thermal control on the other.

The APROP programme's two buildings provide services comparable to those of a conventional building, such as lifts, and boast AA energy certification, given their incorporation of sustainable systems, such as the use of roofs for producing electricity with photovoltaic panels and use of rainwater.

1 BEDROOM FLAT

30 m² (25.8 m² net floor area)

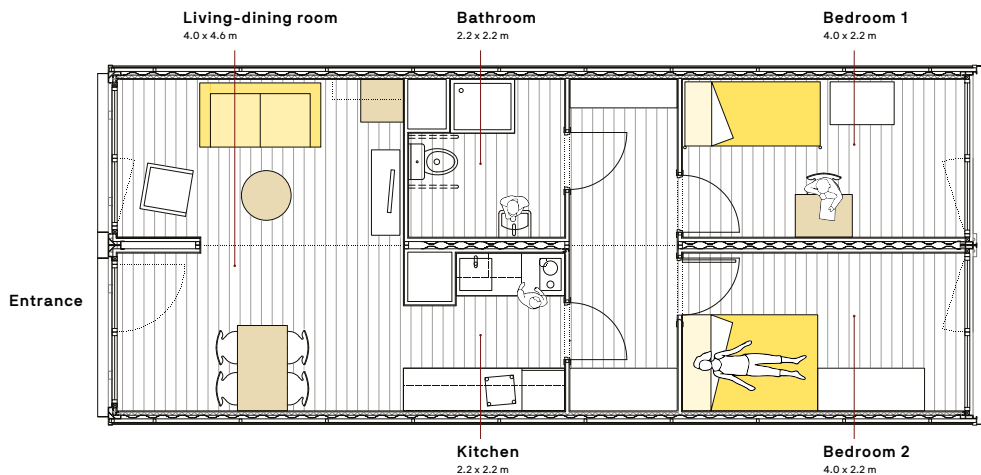


These are designed for one person or a couple and consist of a living-dining room, kitchen, bathroom and bedroom with balcony. They are also equipped with functional and versatile furniture and distributed in such a way as to provide as much free space as possible. They achieve comfort features similar to and in some cases better than those of a conventional dwelling.

Their large windows allow for a considerable amount of natural light to enter and for cross-ventilation, and the central air-conditioning system with air-source heat pumps provides hot air in winter and cool air in summer.

2 BEDROOM FLAT

60 m² (52.7 m² net floor area)



These are designed for families of between three and four members and consist of a living-dining room, kitchen, bathroom, ample storage space and two bedrooms with balcony. As in one-bedroom units, these have their thermal, acoustic and lighting comfort ensured through the use of high-quality and high-efficiency installations, insulation and spatial characteristics.

The flats have been designed in accordance with accessibility criteria, with a percentage of the total adapted for individuals with reduced mobility.

The first APROP building, in the Gòtic neighbourhood in the Ciutat Vella district, has received a number of local and international prizes and distinctions:

- New European Bauhaus Prize 2021, in the category of modular, adaptable and mobile living solutions.
- First Prize for Work of the Year in Ibero-American Architecture 2021.
- Honourable mention in the MAPEI Prize for sustainable architecture 2020.
- Special mention in the FAD Arquitectura Prize 2020.
- Runner-up in the Catalunya Construcció Prize in the category of innovation in construction.
- Runner-up in the AMO Architecture Awards 2021, France.
- Project selected for the 15th Spanish Biennial of Architecture and Urban Planning (BEAU).