

Supplier payment within 30 days

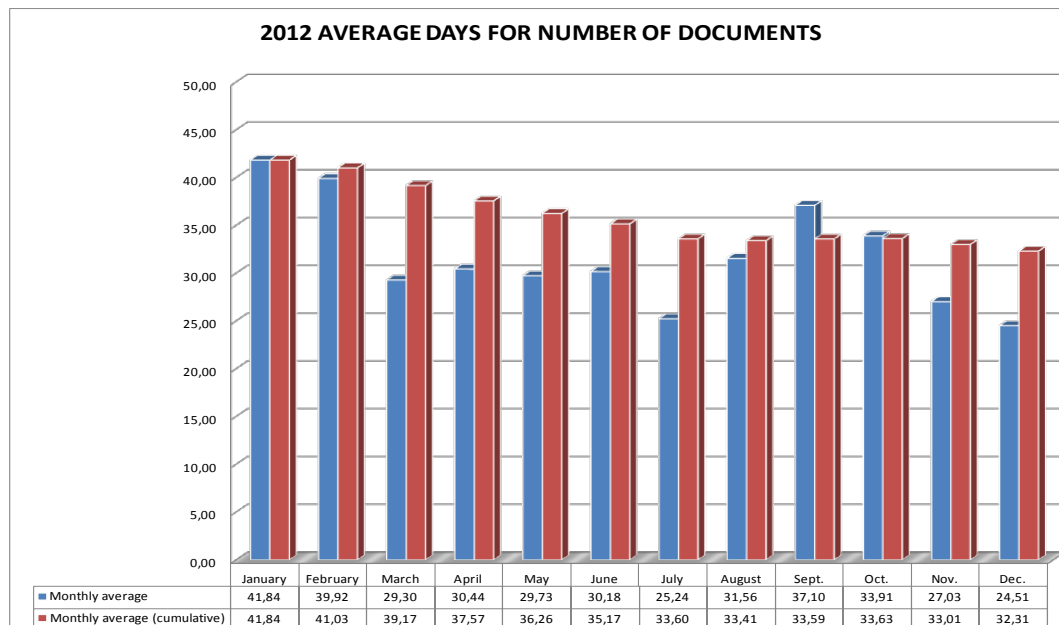
Government measure: Barcelona City Council supplier payment within 30 days since the invoice receipt.

Measure goal: Favor the liquidity of Barcelona City Council suppliers.

This measure is included in a government strategic objectives package, which also considers budgeting techniques according to the European System of Accounts (ESA95) and setting goals concerning percentages of current saving over current revenues. The following strategic objectives will allow the Barcelona City Council to maintain its remarkable solvency and to boost growth, economic recovery and business competitiveness:

- 1) Favor supplier's liquidity, because of being paid quickly (30 days in 2012).
- 2) Avoid public administrations to take advantage of supplier's leverage as a financing method.
- 3) Avoid the bad practices from certain suppliers of charging the financial costs in the bids presented to public administrations (consequence, increased competitiveness)

City Councils and public institutions must help to create the conditions for present and future economic growth. Starting from what's feasible and what depends directly from the institution it's a good way. If suppliers are paid properly it's because of budget consistency, institution solvency and internal processes conducted with effectiveness.



Payment indicators within 30 days

PAYMENT PERIOD BARCELONA CITY COUNCIL

Law 15/2010 of measures against payment slowness to business

2013 OCTOBER

PAYMENT PERIOD MONTHLY INDICATORS : GENERAL MANAGER INSTRUCTION 30.12.2011

| Payment period | Days |
|-----------------------------------|-------------|
| Payment period average | 31,4 |
| Average weighted by amount | 29,6 |

| Payment period in days | Number of payment obligations documents | % of payment obligations | Amount paid (in thousands) | % of amount paid |
|------------------------|---|--------------------------|----------------------------|------------------|
| Until 30 | 2.847 | 71,4% | 43.969.860 | 81,1% |
| Between 31 and 40 | 425 | 10,7% | 4.951.868 | 9,1% |
| Between 41 and 50 | 285 | 7,2% | 2.062.934 | 3,8% |
| Between 51 and 60 | 77 | 1,9% | 1.549.265 | 2,9% |
| Between 61 and 70 | 110 | 2,8% | 556.241 | 1,0% |
| More than 70 | 242 | 6,1% | 1.155.116 | 2,1% |
| TOTAL | 3.986 | 100,0% | 54.245.284 | 100,0% |

DETAIL OF PAYMENT PERIOD AND STAGES BY SECTORS AND DISTRICTS

| Sectors and districts | Average period of the stage in days | | | | | Number of documents | Amount paid (in thousands) |
|--|-------------------------------------|-----------------------------|---------------------------|--------------------------------|------------------------|---------------------|----------------------------|
| | Registration / accounting entry | Accounting entry / approval | Approval / treasury limit | Treasury limit / payment order | Registration / payment | | |
| TOTAL CITY COUNCIL | 16 | 6 | 3 | 6 | 31 | 3.986 | 54.245 |
| Manager's Office for Resources | 26 | 10 | 3 | 7 | 45 | 1.355 | 4.095 |
| Manager's Office for Quality of Life, Equality and Sport | 9 | 8 | 2 | 5 | 24 | 420 | 8.192 |
| Manager's Office for Prevention, Safety and Mobility | 8 | 5 | 3 | 6 | 22 | 347 | 4.066 |
| Manager's Office for Urban Housing | 11 | 6 | 6 | 4 | 27 | 138 | 716 |
| Attached Manager's Officer for Environment and Urban | 11 | 7 | 6 | 5 | 29 | 92 | 17.914 |
| Manager's Office for Economy, Business and Employ | 11 | 5 | 3 | 6 | 26 | 87 | 269 |
| Manager's Office for Culture, Knowledge, Creativ. and | | | | | | | |
| District Ciutat vella | 11 | 6 | 5 | 6 | 28 | 149 | 3.249 |
| District Eixample | 12 | 4 | 4 | 6 | 26 | 136 | 2.594 |
| District Sants-Montjuic | 13 | 4 | 4 | 5 | 25 | 232 | 2.263 |
| District Les Corts | 9 | 4 | 4 | 4 | 21 | 152 | 1.252 |
| District Sarrà-St.Gervasi | 18 | 5 | 5 | 5 | 33 | 132 | 1.118 |
| District Gràcia | 10 | 4 | 4 | 5 | 23 | 159 | 1.609 |
| District Horta-Guinardó | 9 | 2 | 4 | 6 | 21 | 167 | 1.477 |
| District Nou Barris | 16 | 3 | 6 | 4 | 29 | 110 | 1.684 |
| District Sant Andreu | 9 | 4 | 3 | 5 | 21 | 161 | 1.424 |
| District Sant Martí | 10 | 4 | 4 | 5 | 24 | 149 | 2.325 |

Average days for numbers of documents (2013)

