



# Housing in Can Fabra

46 temporary homes and the head offices of the human tower group, the Colla Castellera Jove de Barcelona

Barcelona Municipal Institute of Housing and Renovation



# 46 temporary homes and the head offices of the human tower group, the Colla Castellera Jove de Barcelona

Construction of a building containing 46 temporary homes and a facility, located on Carrer 9-11 Int. (CAN FABRA) in the Barcelona district of Sant Andreu, promoted by Barcelona's Municipal Institute of Housing and Renovation (IMHAB).

Designed by: Roldán + Berengué, architects

**ESTEM CONSTRUÏT 46 HABITATGES PÚBLICS I UN EQUIPAMENT CULTURAL**

Data previsió finalització:  
**3r trimestre 2019**

**Gestor:** Institut Municipal de l'Habitatge i Rehabilitació  
**Operador:** SACYR Construcció, S.A.  
**Direcció d'obra:** José Miguel Roldán  
**Direcció d'execució:** Salvador Arisa  
**CSS:** Joaquim Sánchez, TPF Getinsa Euroestudios, S.L.

**Arquitectes:**  
R+B Roldán+Berengué,  
Arquitectes

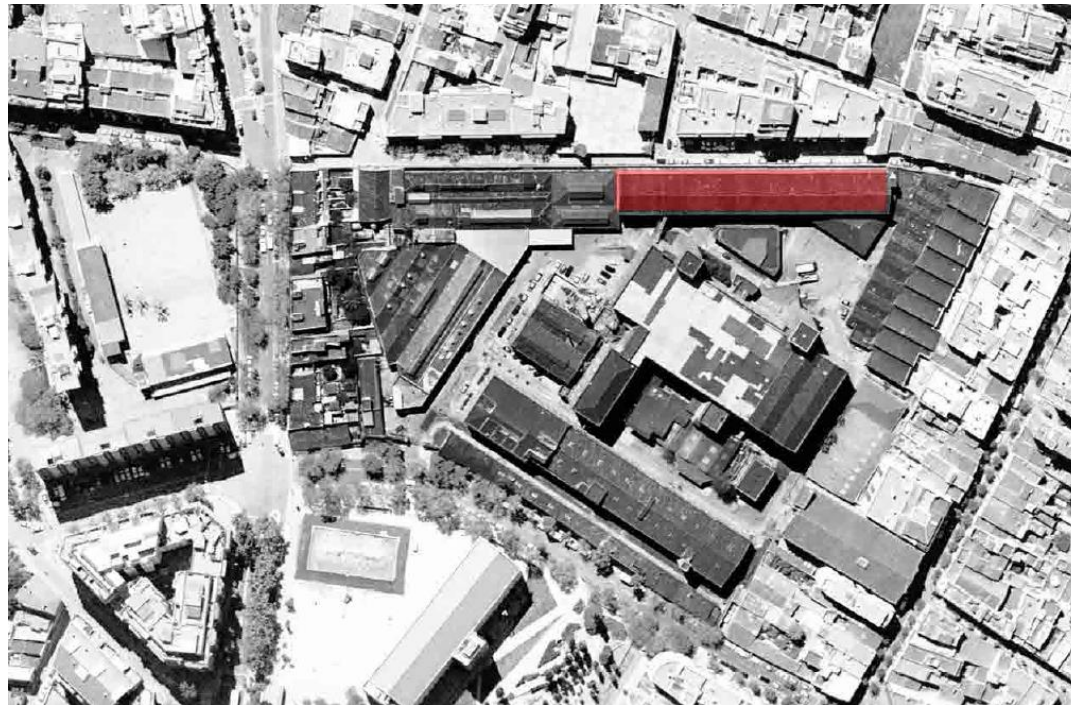
**Aparellador:**  
Salvador Arisa

Ajuntament de Barcelona

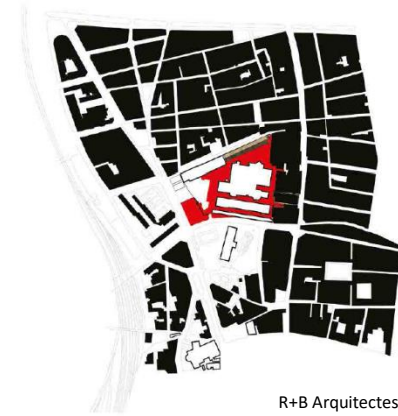


## Context

The project is being implemented in Building G of the Fabra i Coats industrial complex, in Sant Andreu.



R+B Arquitectes



R+B Arquitectes



R+B Arquitectes





## Existing conditions

Building G has a floor plan of approximately 100 x 15 m, and is 12 m high. It was built in 1905, and was extended to create a second floor in 1923, and then extended again in 1950.



Coats Fabra. 100 years of history



ALÇAT MUR CARRER PARELLADA

R+B Arquitectes



ALÇAT INTERIOR RECINTE

R+B Arquitectes



R+B Arquitectes

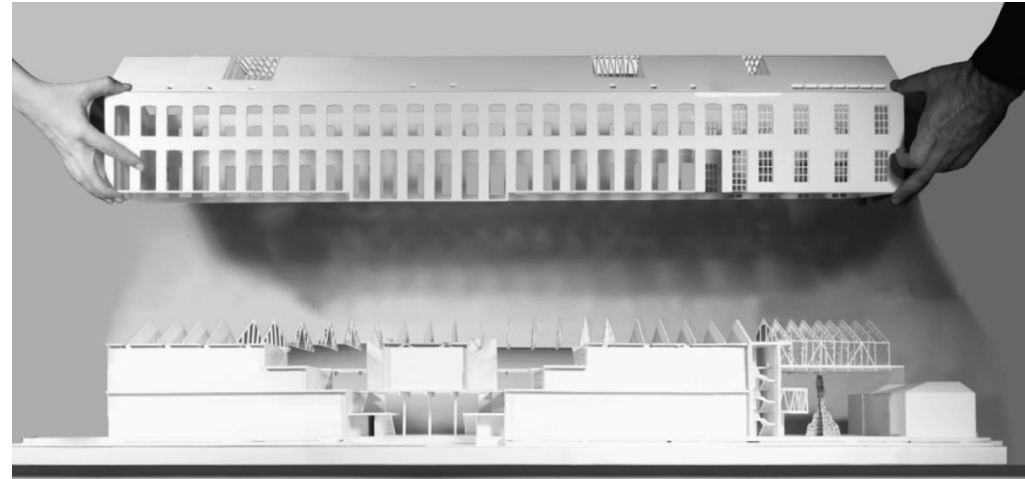
ALÇAT TESTER- FOTOGRAFIA



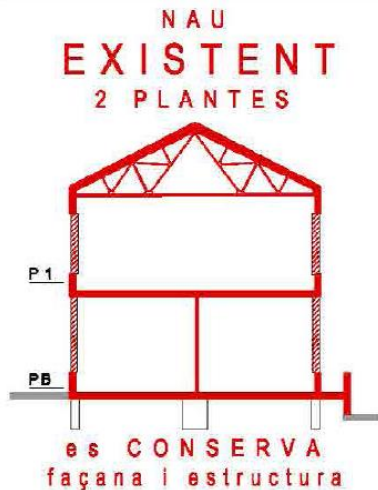
# Programme

46 housing units with an average constructed surface area of 64 m<sup>2</sup>, and the head offices of the human tower group, the Colla Castellera Jove de Barcelona

Total constructed surface area: 5,391.95 m<sup>2</sup>

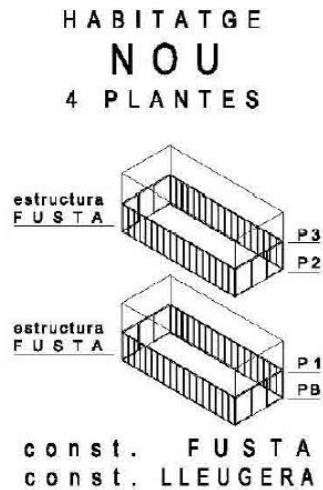


R+B Arquitectes



**EXISTING BUILDING  
2 FLOORS**  
The façade and the structure  
ARE CONSERVED

+



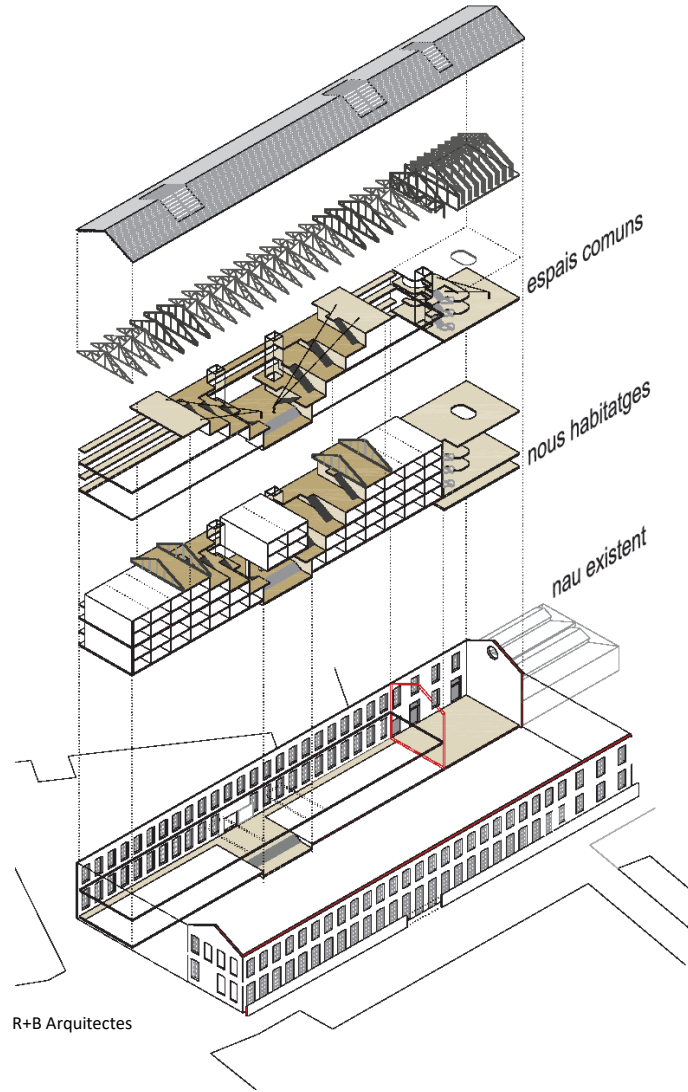
**NEW HOUSING UNITS  
4 FLOORS**  
WOODEN structure  
construction LIGHT WOOD

=

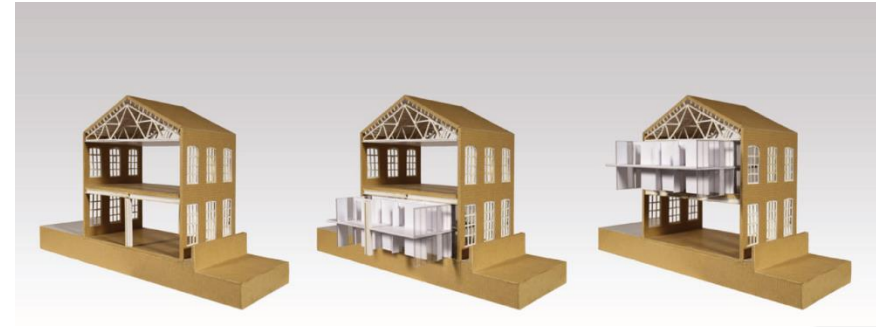


**REVERSIBLE BUILDING  
4 FLOORS**  
new construction  
REMOVABLE AND RECYCLABLE

R+B Arquitectes



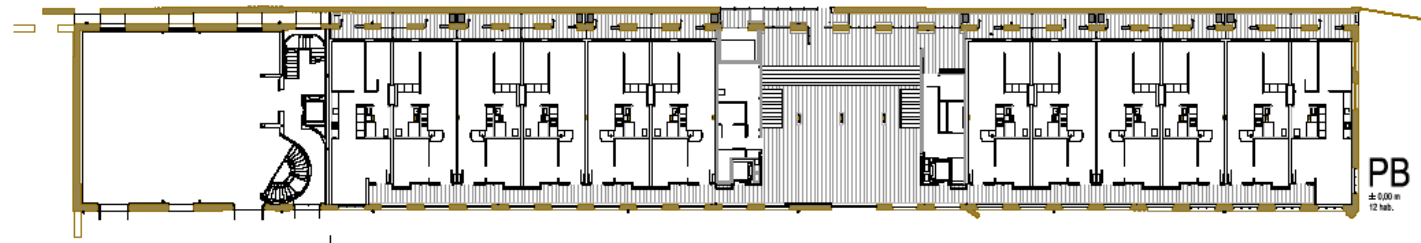
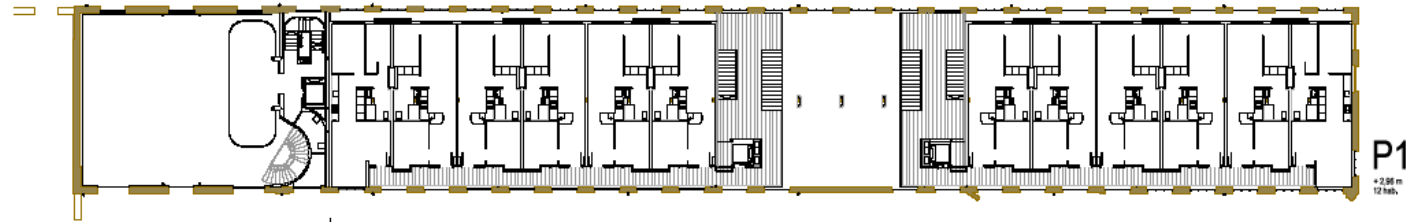
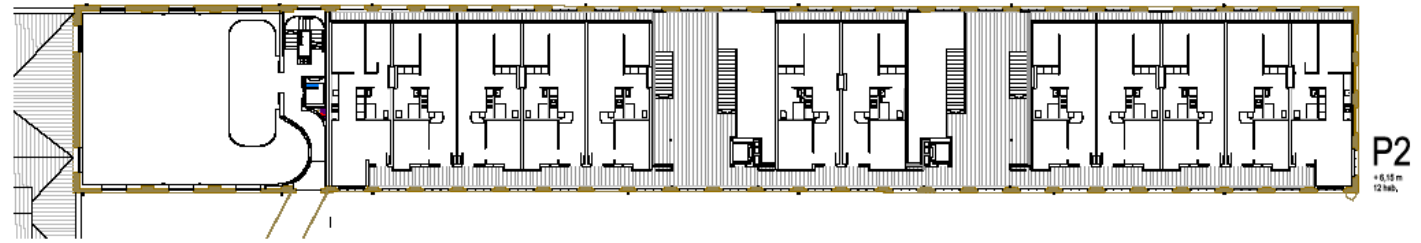
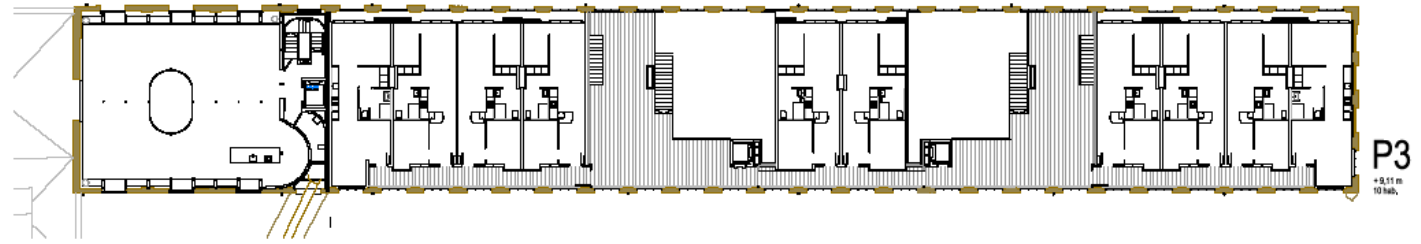
R+B Arquitectes

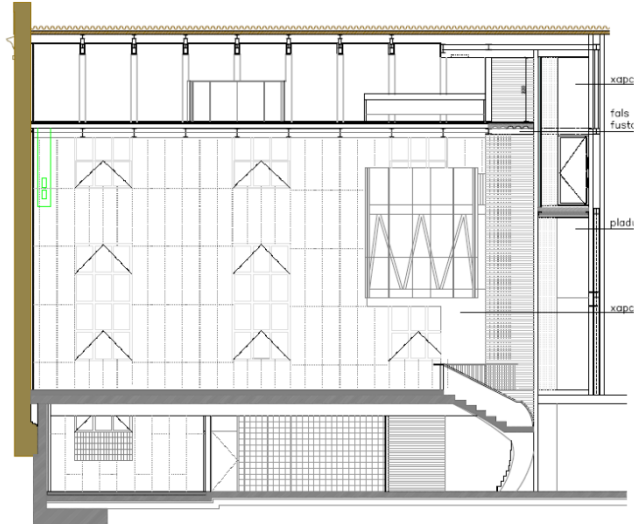


R+B Arquitectes

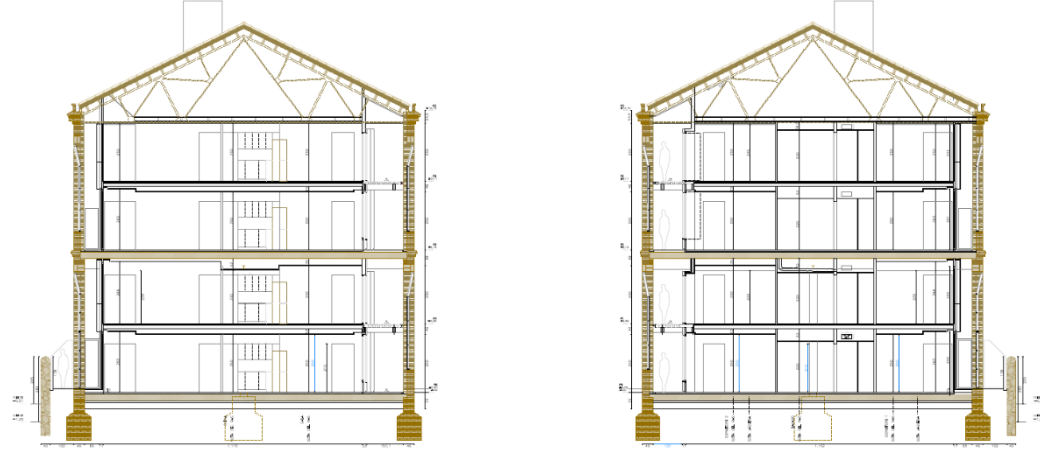


Territorial Services  
(SST) IMHAB

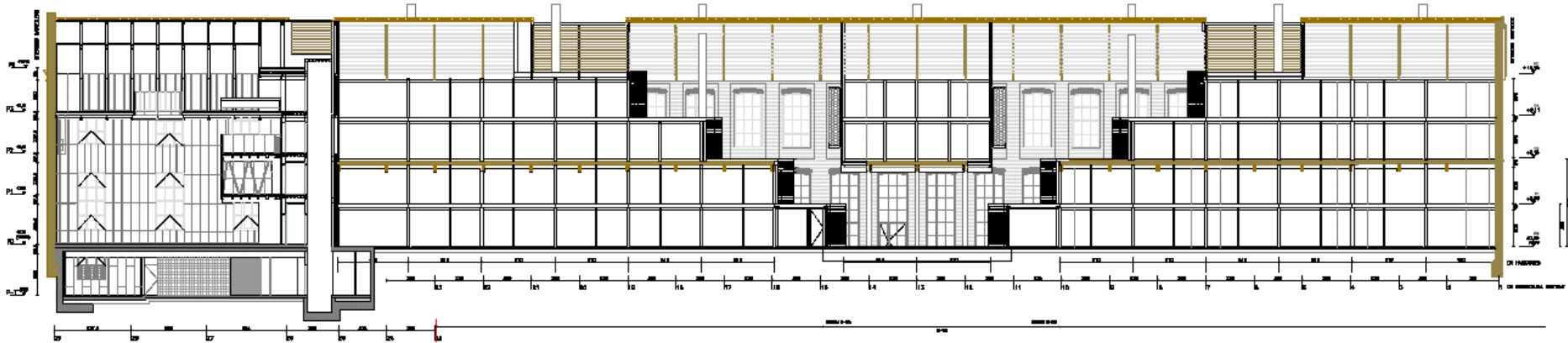




R+B Arquitectes

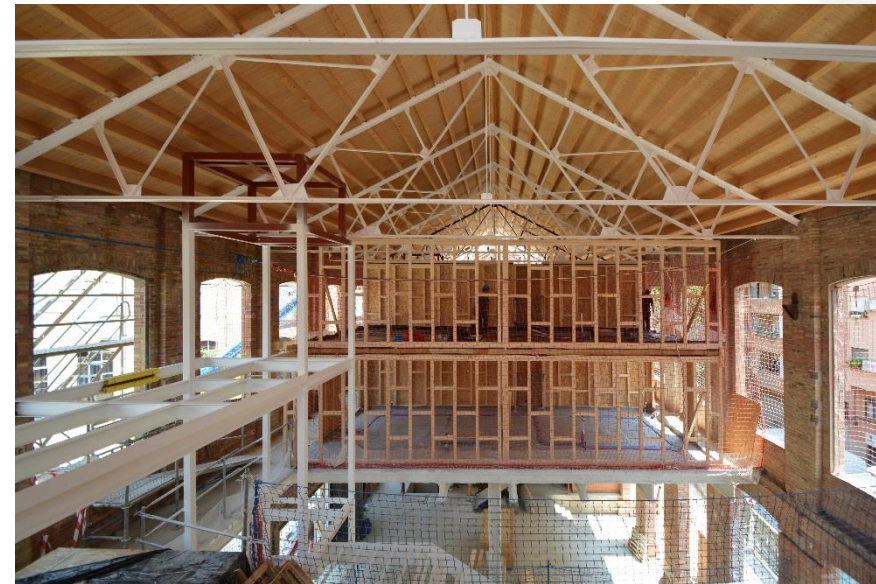
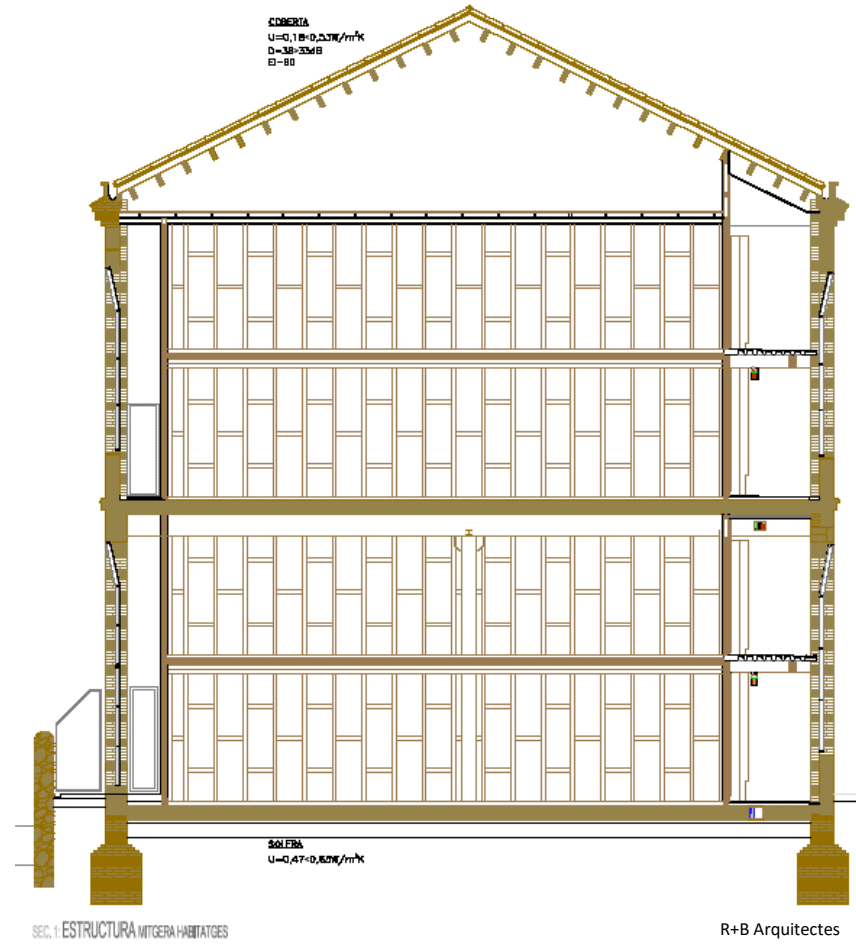


R+B Arquitectes



R+B Arquitectes





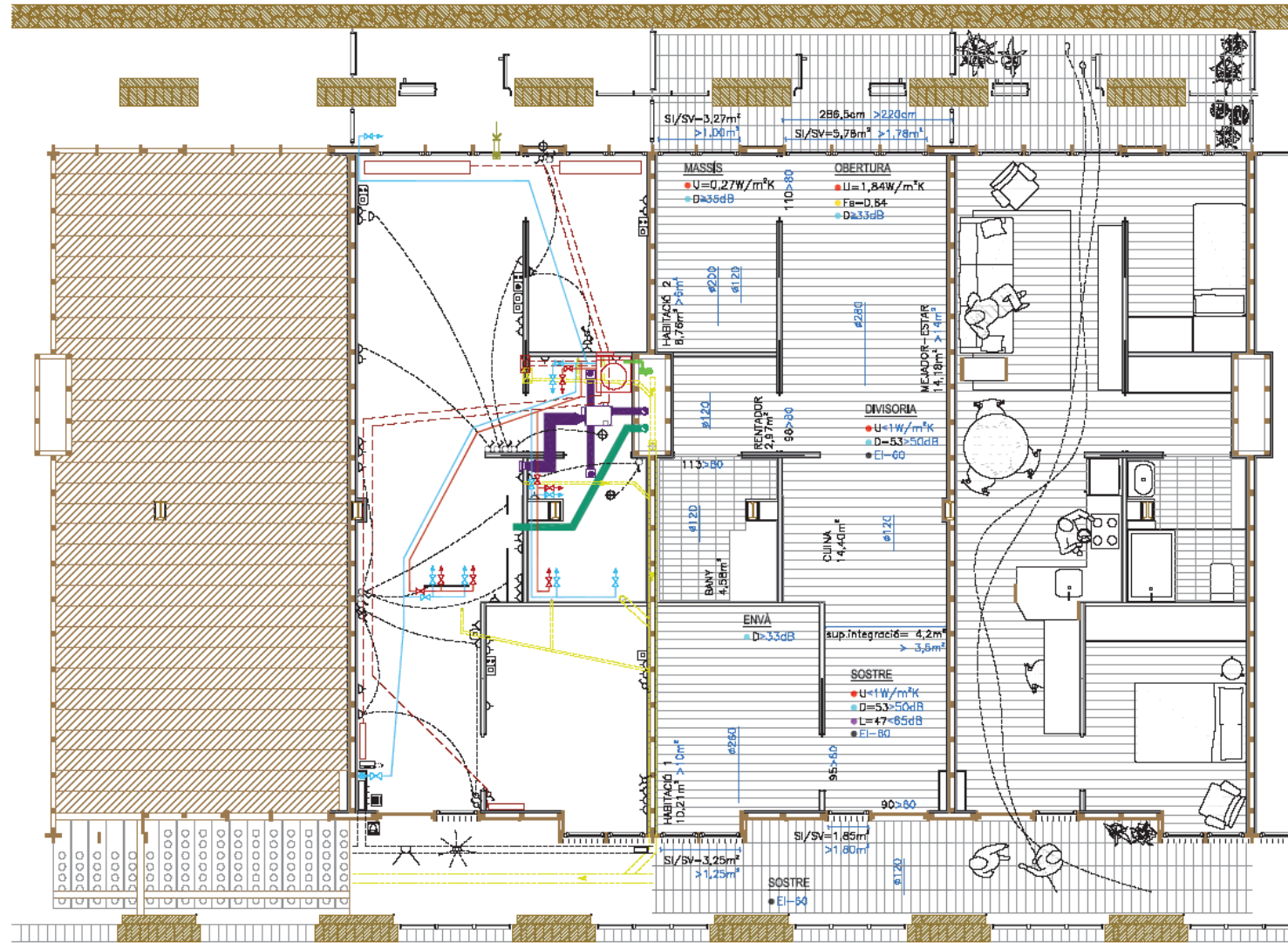
R+B Arquitectes



SSTT IMHAB



SSTT IMHAB





Jordi Surroca



Jordi Surroca



Jordi Surroca



Jordi Surroca

### QUALIFICACIÓ ENERGÈTICA DE L'EDIFICI ACABAT

ETIQUETA



**DADES DE L'EDIFICI**

Normativa vigent construcció/rehabilitació	Tipus d'edifici	<b>Bloc d'habitatges</b>
<b>CTE 2013</b>	Acreça	<b>Carrer Parellada 7 11</b>
Referència catastral	Municipi	<b>Barcelona</b>
<b>2473783DF3827C00010T</b>	C.P.	<b>08030</b>
	C. Autònoma	<b>Catalunya</b>

**ESCALA DE LA QUALIFICACIÓ ENERGÈTICA**

	Consum d'energia kWh/m <sup>2</sup> any	Emissions kg CO <sub>2</sub> / m <sup>2</sup> any
<b>A</b> més eficient		<b>5</b>
<b>B</b>	<b>34</b>	
<b>C</b>		
<b>D</b>		
<b>E</b>		
<b>F</b>		
<b>G</b> menys eficient		

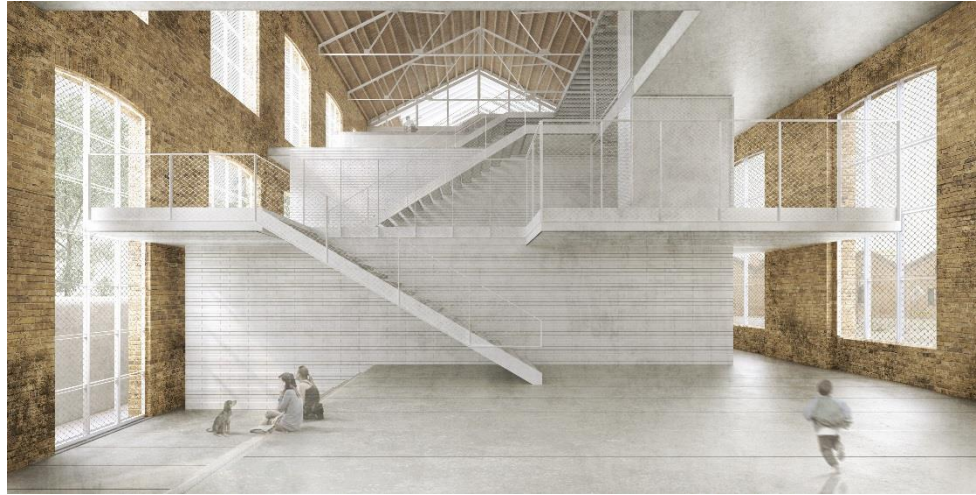
**REGISTRE**

J51N KYCGM	Vàlid fins
	<b>02/10/2029</b>

Generalitat de Catalunya  
Institut Català d'Energia

ESPAÑA  
Directiva 2010 / 31 / UE

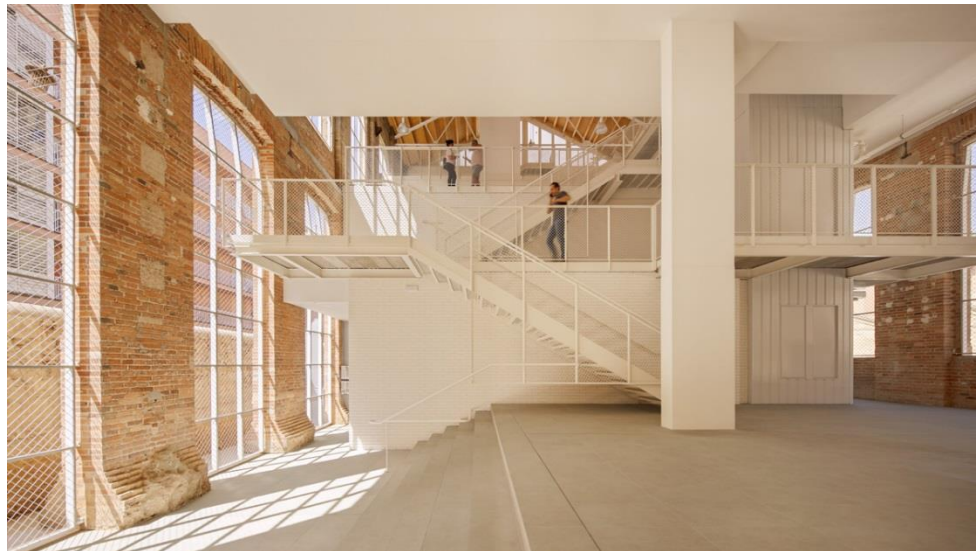




R+B Arquitectes



Jordi Surroca



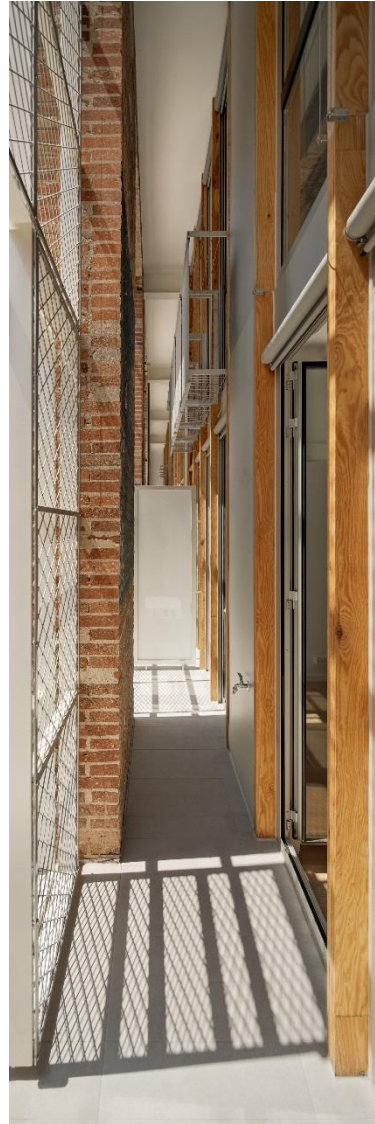
Jordi Surroca



Jordi Surroca



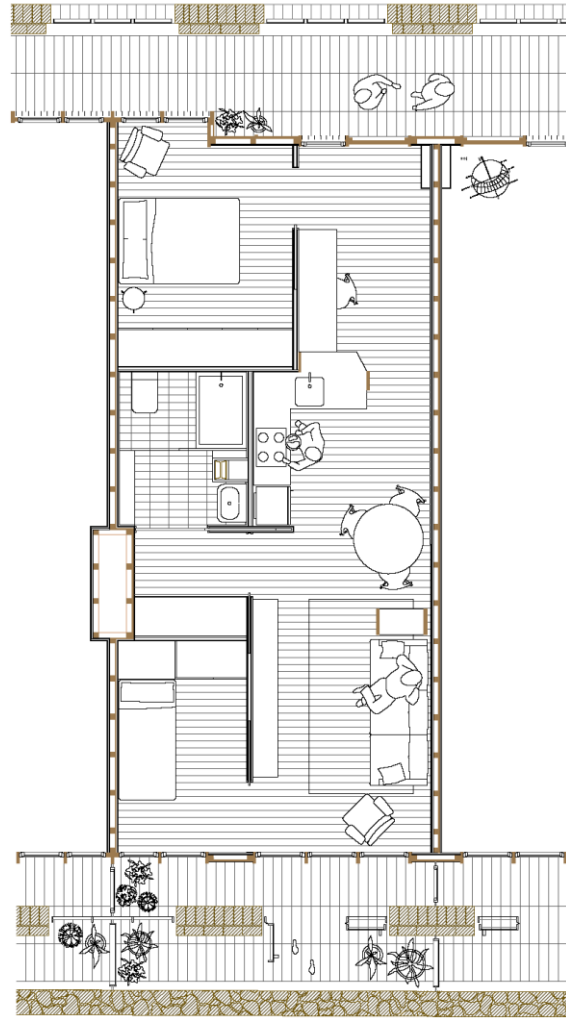
Jordi Surroca



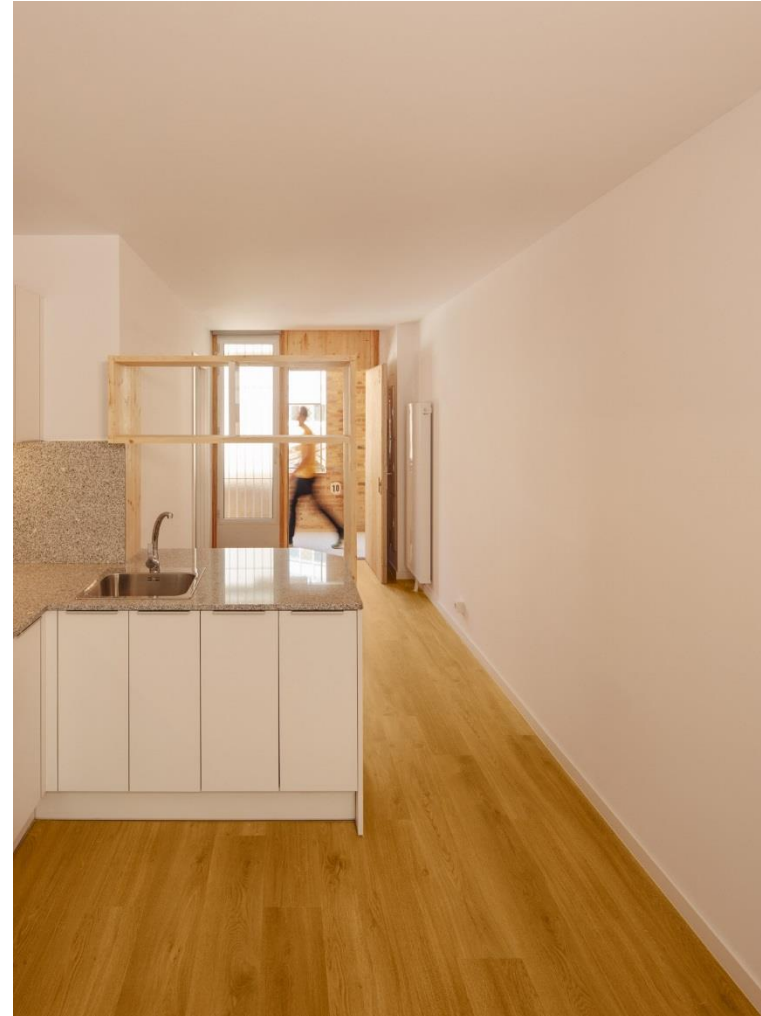
Jordi Surroca



Jordi Surroca



R+B Arquitectes



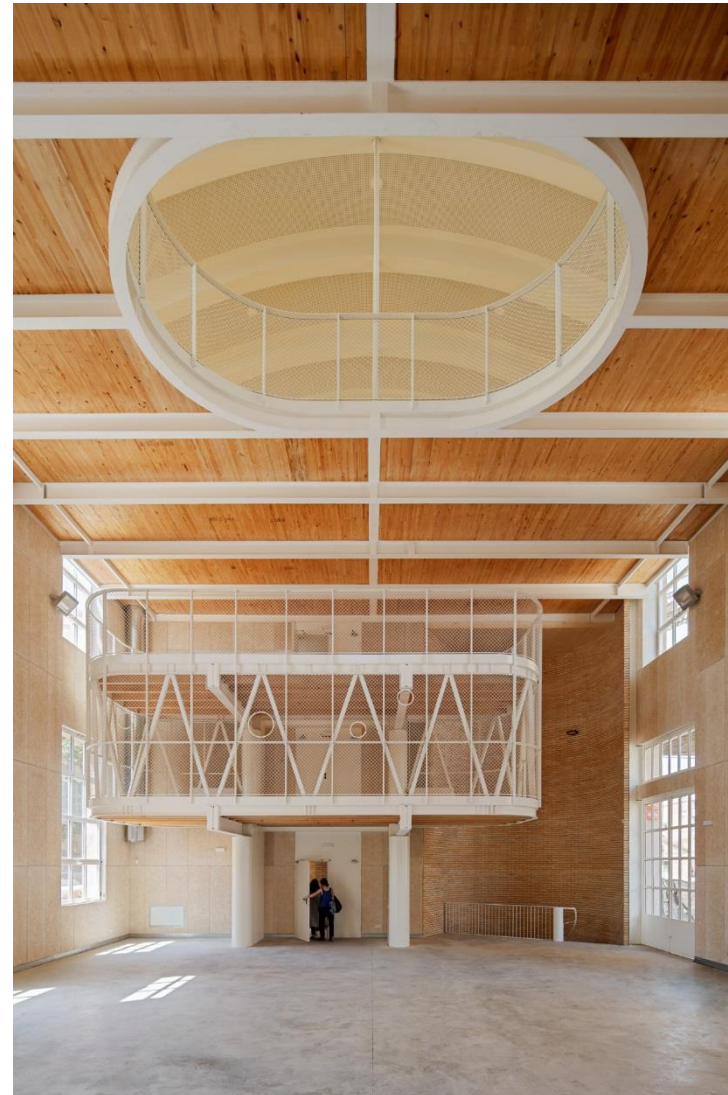
Jordi Surroca







Jordi Surroca



Jordi Surroca



**Thanks for your collaboration!**

Barcelona Municipal Institute of Housing and Renovation  
*[www.habitatge.barcelona/en](http://www.habitatge.barcelona/en)*



**Ajuntament  
de Barcelona**