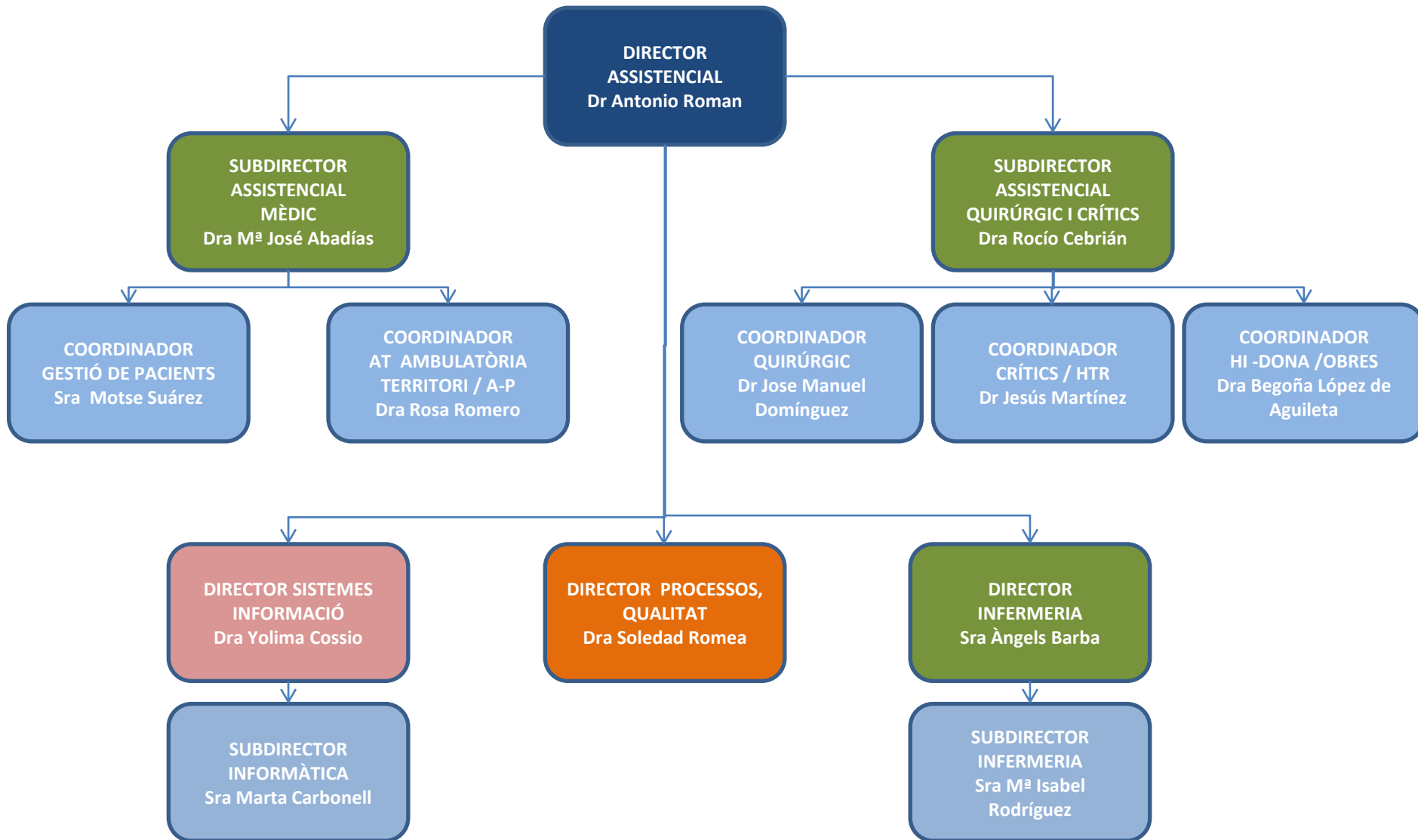


Consell de Salut Sant Andreu

Antonio Roman
Director Assistencial

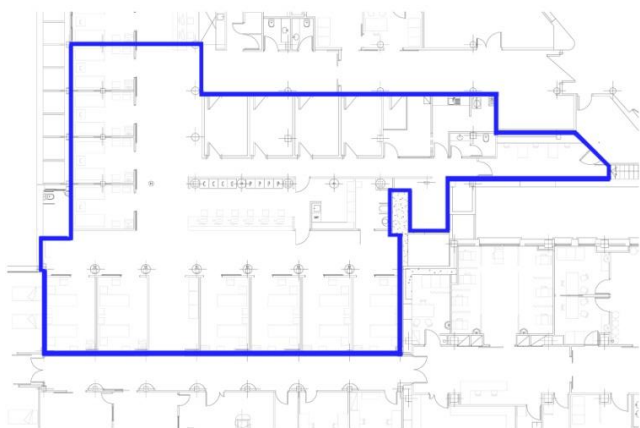
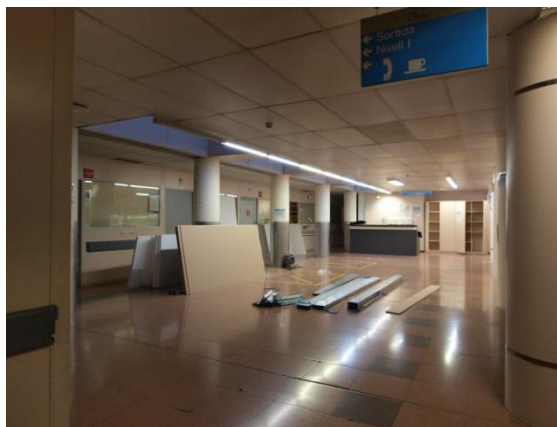
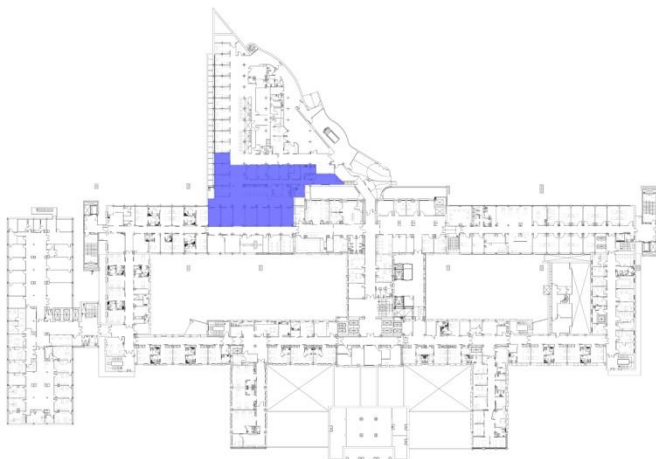


COMITÉ ASSISTENCIAL setembre 2019



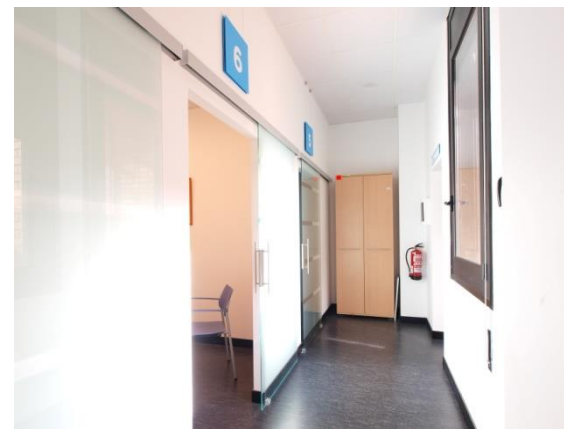
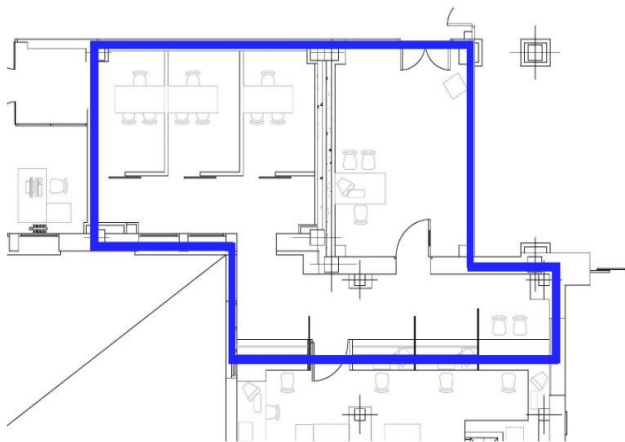
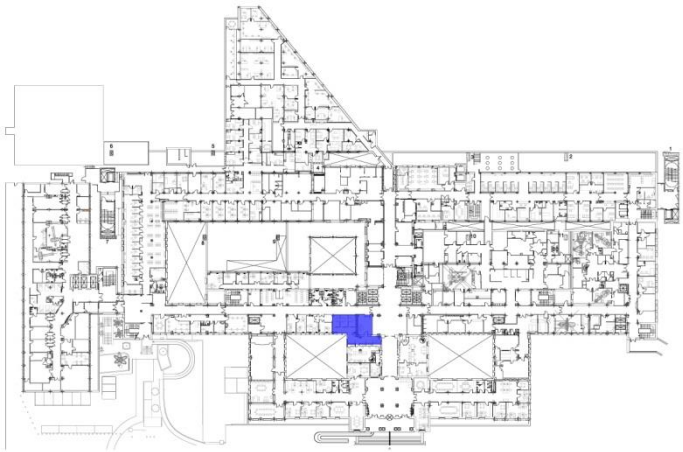
PROJECTE / OBRA REALITZADA	SUPERFÍCIE
HOSPITAL GENERAL	3.907 m2
HOSPITAL MATERNO-INFANTIL	631 m2
HOSPITAL TRAUMATOLOGIA	0 m2
EDIFICI DOCENT (SALA D'ACTES) / PCI	4.182 m2
TOTAL	8.720 m2

PROJECTES / OBRA EN EXECUCIÓ	SUPERFÍCIE
HEMODIALISIS (EDIFICI GENERAL PL 8 ANNEXE)	501 m2
CONSULTES EXTERNES (HMI)	1.703 m2
BUNKER 3 RADIOTERAPIA (EDIFICI GENERAL PSS)	123 m2
CLIMATITZACIÓ PERE VIRGILI	100 m2
TOTAL	2.427 m2



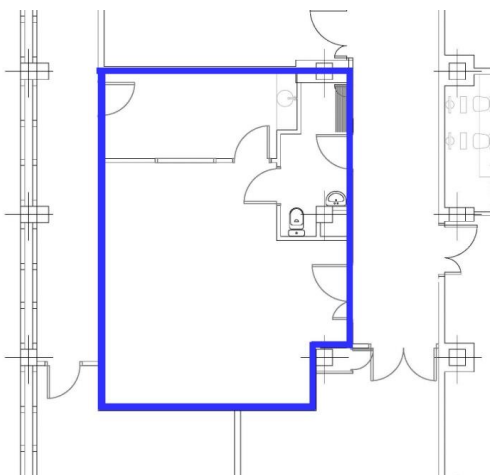
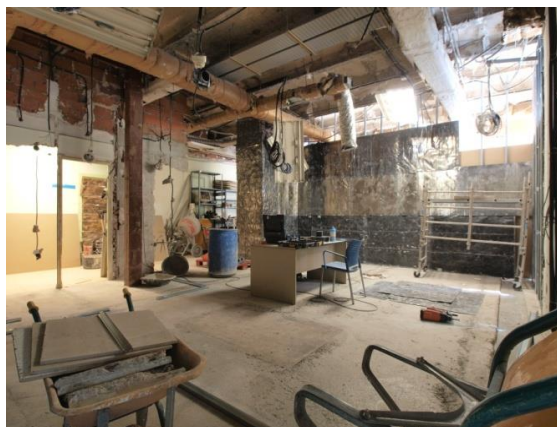
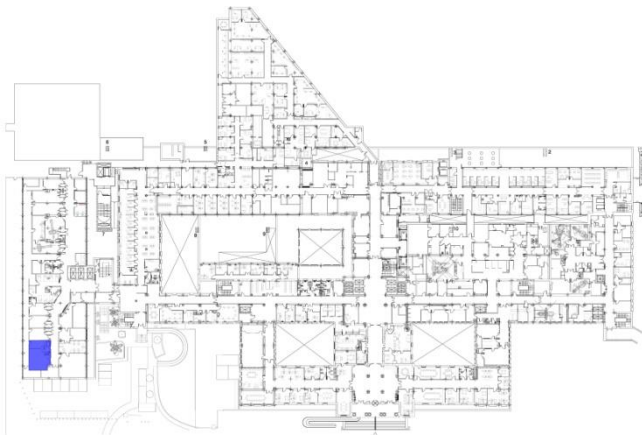
**SUPERFÍCIE
IMPORT**

**660 m2
854 k euros**



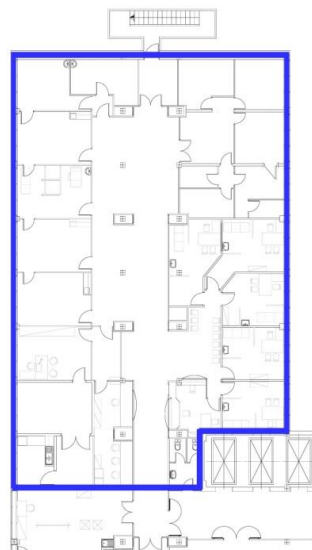
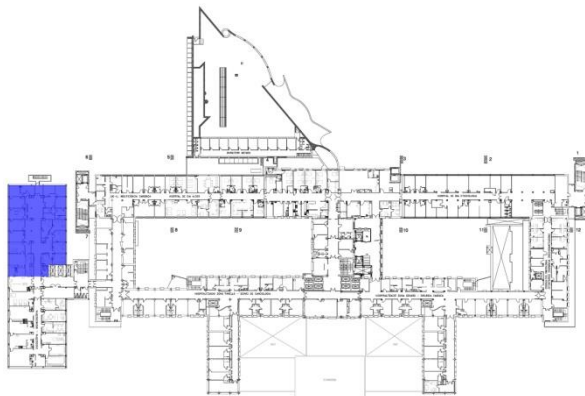
SUPERFÍCIE
IMPORT

85 m2
42 k euros



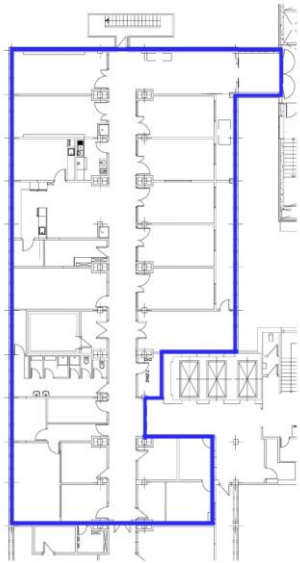
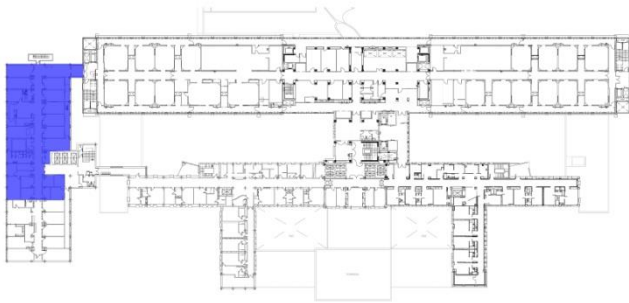
**SUPERFÍCIE
IMPORT**

**50 m²
48 k euros**

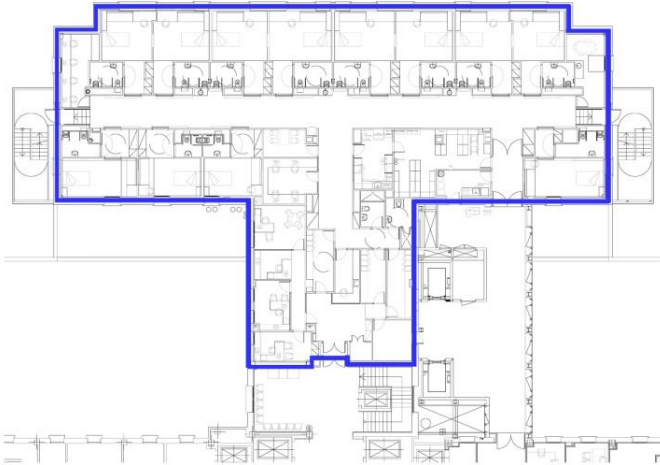
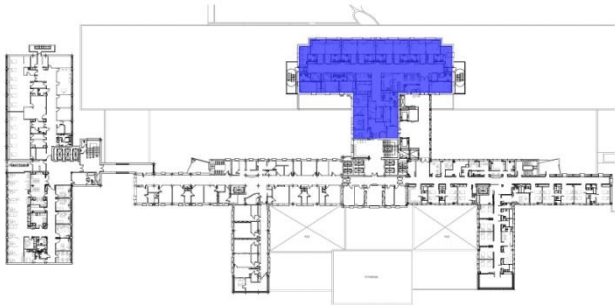


**SUPERFÍCIE
IMPORT**

**677 m2
0 euros**

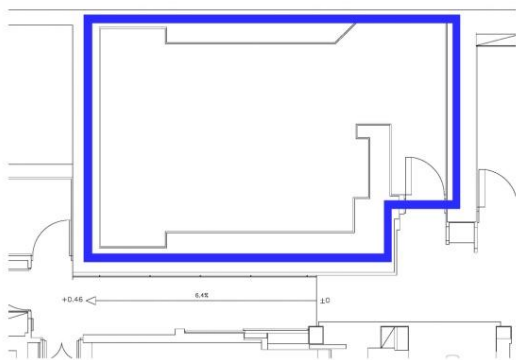
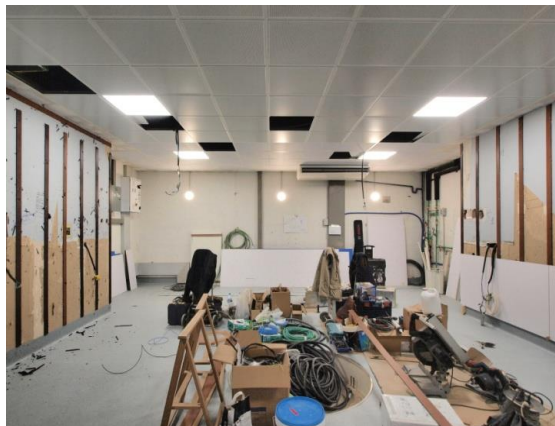
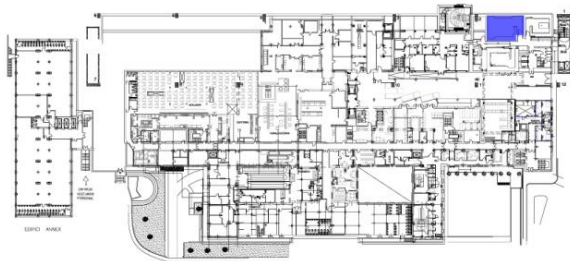


SUPERFÍCIE **679 m2**
IMPORT **255 k euros**



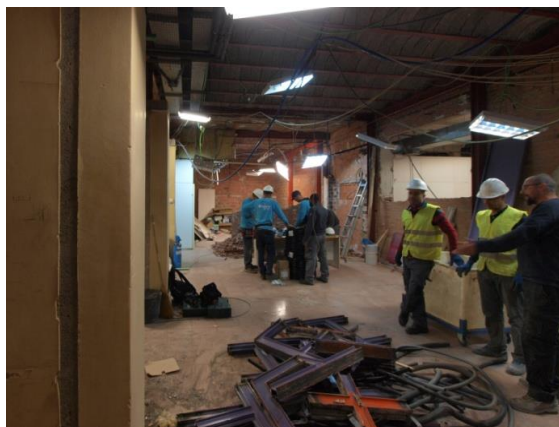
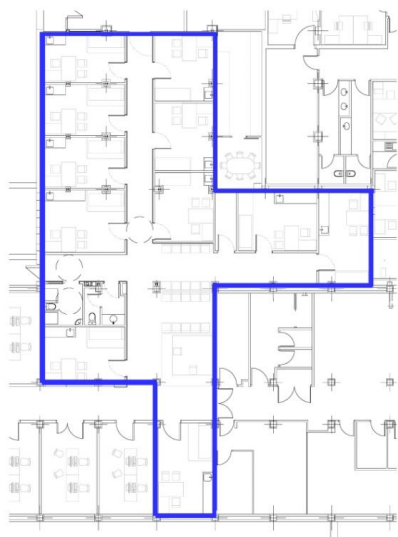
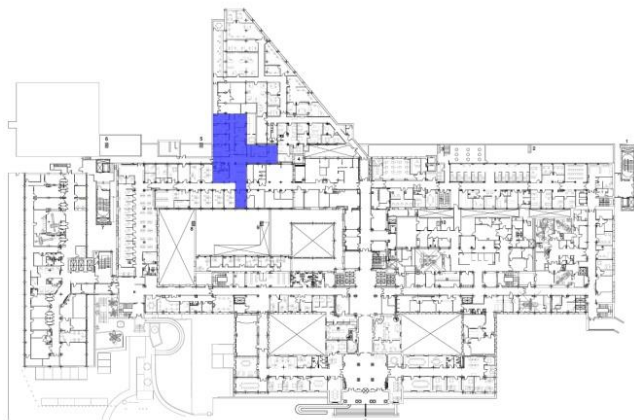
**SUPERFÍCIE
IMPORT**

**816 m²
859 k euros**

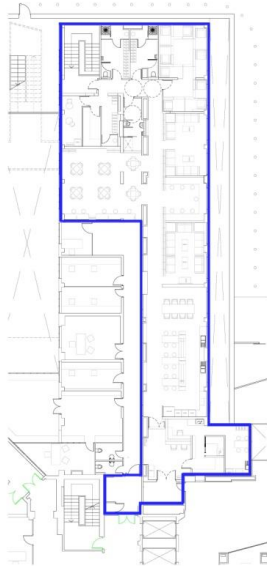


**SUPERFÍCIE
IMPORT**

**105 m2
0 euros**

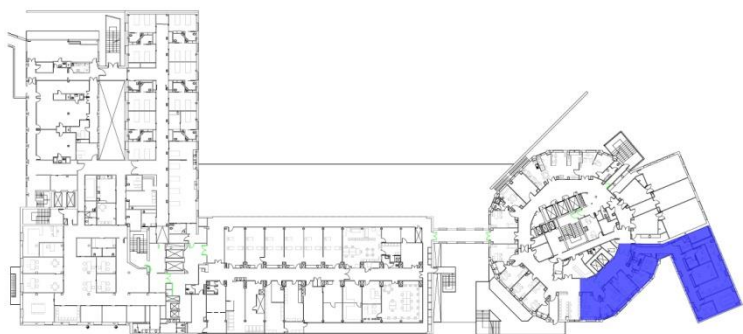


SUPERFÍCIE **280 m2**
IMPORT **265 k euros**

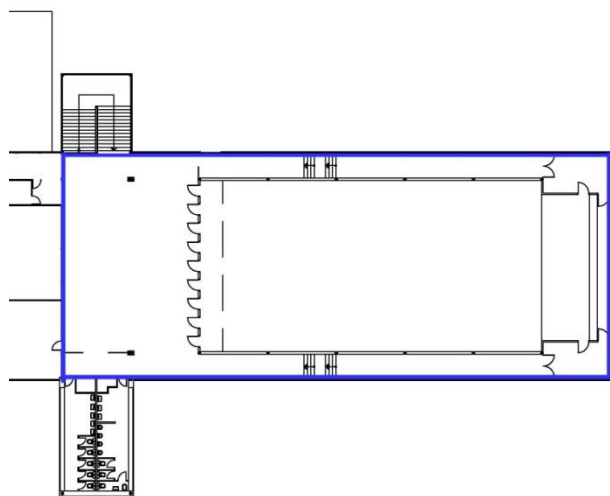
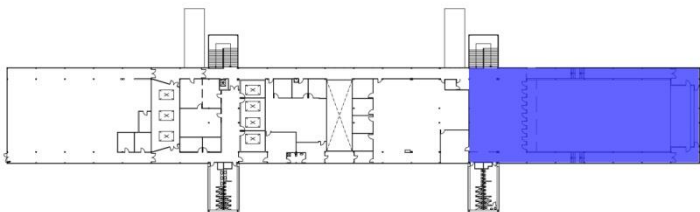


**SUPERFÍCIE
IMPORT**

**325 m2
22 k euros**

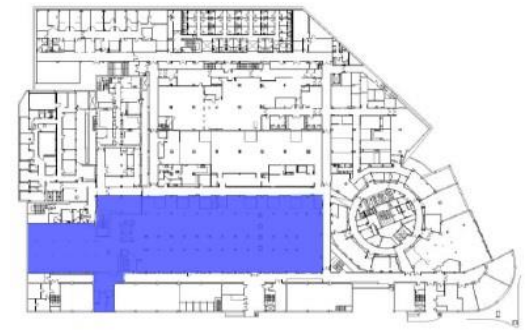


SUPERFÍCIE **305 m2**
IMPORT **300 k euros**

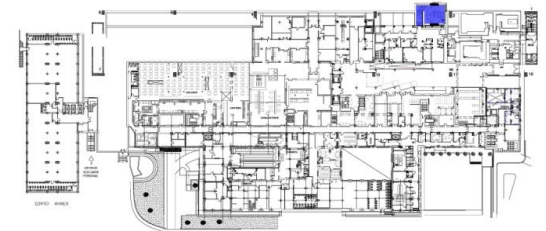
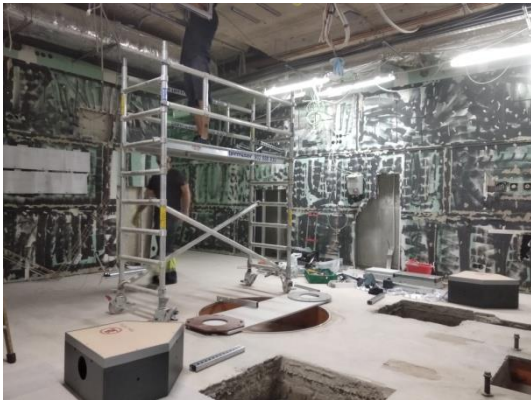


**SUPERFÍCIE
IMPORT**

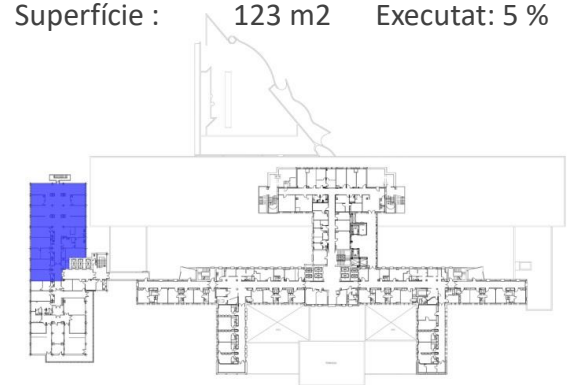
**4.182 m2
224 k euros**



Consultes externes
Superfície : 1.703 m2 Executat: 85 %



Búnker 3
Superfície : 123 m2 Executat: 5 %



Hemodiàlisis
Superfície : 501 m2 Executat: 15 %